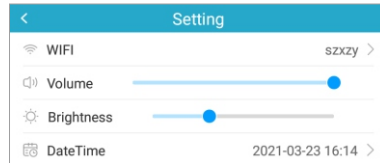


## Instruction for functional module operation

### Setting:



**WiFi** connect WiFi on/off

**Volume** Control the volume (can also be controlled by the physical buttons on the right side of the pen)

**Brightness** Adjust brightness of the screen

**Date Time** It can set time zone, date and time

**Standby Time** Standby time can be set to 2 minutes, 5 minutes, 10 minutes or never

**Automatic shutdown** Automatic shutdown time can be set to never, 15 minutes, 30 minutes or 60 minutes

**Language** Refers to the interface language of the pen, only simplified Chinese, English, Japanese and traditional Chinese are supported at present.

**Bluetooth** Set Bluetooth to connect Bluetooth devices.

**Pilot switch**

**Upgrade** Newly firmware version will be pushed, and we can upgrade it accordingly.

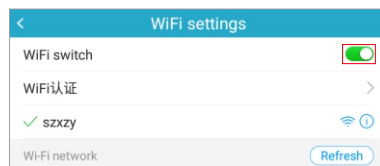
**Reset** Clear cache or restore factory settings

**About** detail information for the pen

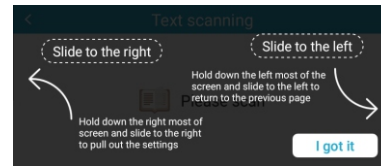
### Notes:

1. No matter for which function, we have to connect with WiFi first. The WiFi setting shows as the steps below:

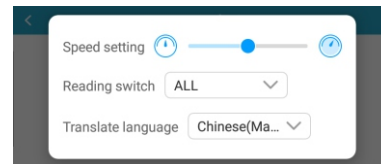
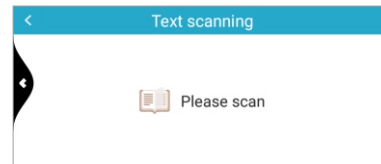
Choose the module setting - WiFi- WiFi switch on, then choose the right WiFi name and put in the password. (Some WiFi networks in airports, hotels or some public places need to jump to the authentication web page before they can be used normally, suggest to use the hotspot)



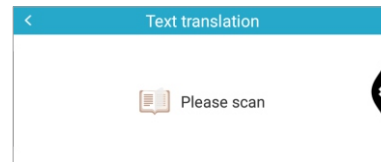
2. For each model, the functional setting is made by slide to left or right.



Slide to the right from screen left side to make setting of this functional module:



Slide to the left from screen right side to back or exit the current page:

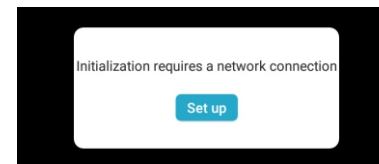


## Turn on the pen operation:

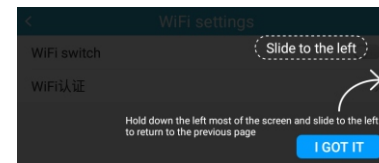
1. Turn on the pen, we will see this interface, choose the language you want. This is just for the interface language. Simplified Chinese, Traditional Chinese, English and Japanese supported at present.



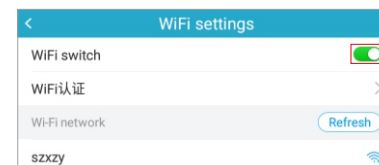
2. After choose English (or other 3 languages you know), we will see the remind of network connection: language. Simplified Chinese, Traditional Chinese, English and Japanese supported at present.



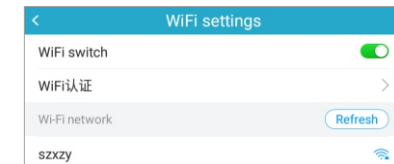
3. "Set up", and we will see the instruction of how to back to the previous page.



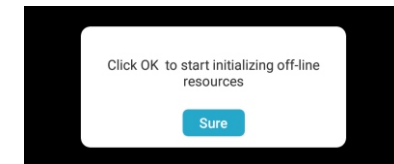
4. Choose "I got it", then we will see the interface of WiFi connection. Switch on it and

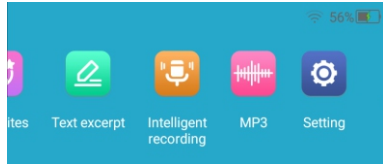
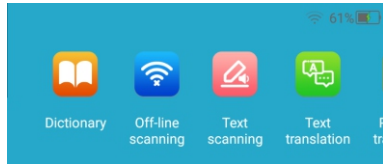


5. Choose the right WiFi you need, and type in the passwords.



6. After WiFi connected, back to the previous page, we will see the reminding to initialize the resources, choose "Sure", and waiting it to 100%, it will restart automatically. We can use all functional then.

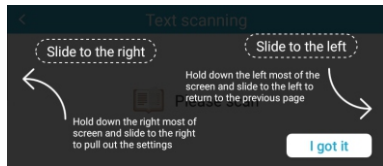




### Dictionary:

Notes: At present, only English and Chinese dictionaries are supported. Scan the words or sentences, it will read the full sentence and translation first, then we can choose each word to get the translation and explanations. On the right corner, there is the star icon to add the words to your favorites, we can find it in the favourite module for future review.

The scanned sentences can be edited, and the scanned wrong words can be modified.



### Off line scanning:

It can scan translation without connecting to WiFi network, but it only supports Chinese, English and Japanese translation, and the accuracy is not as good as online.

### Text Scanning:

This function module needs to be connected to the network, just scan and read, no translation.

### Text translation:

Text translation needs to be connected to WiFi, slide to right to set reading speed, languages. 55 languages are supported. Touch the "speaker" icon to read out. Several lines can be translated on time, just keep scanning different lines less than 2 seconds.

### Phonetic translation:

Voice translation needs to be connected to WiFi, 112 languages are supported. Press the blue and yellow buttons on the screen/on the face of the pen to speak source language and target language. If it is failed, please check the network and try again. It supports at most 59S voice translation.

### English Study:

English accompaniment reading needs to be connected to WiFi, It is mainly for English and Chinese speaking.

### Favorites:

The collected words in Dictionary module can be found here and can be deleted. This icon < > indicates that you can turn the page up and down.

### Text excerpt:

Text extraction function needs to connect WiFi scan before clicking on the top right corner of the @ new file, then scan, you can edit the scan content, line feed, rename the title, click the < icon to save or cancel the file, the saved excerpt can be deleted, copy and paste the scanned contents to the computer via Type-C cable.

### Intelligent recording:

Intelligent recording needs to be connected to WiFi to work with letters display. It's only a simple recording function when offline. Click the icon to enter, then click new recording in the upper right corner, and click the recording icon below to start recording.

### MP3:

Connect to the computer via Type-C cable to copy MP3 files for listening.

## Scan Translator

### Instruction for functional module operation